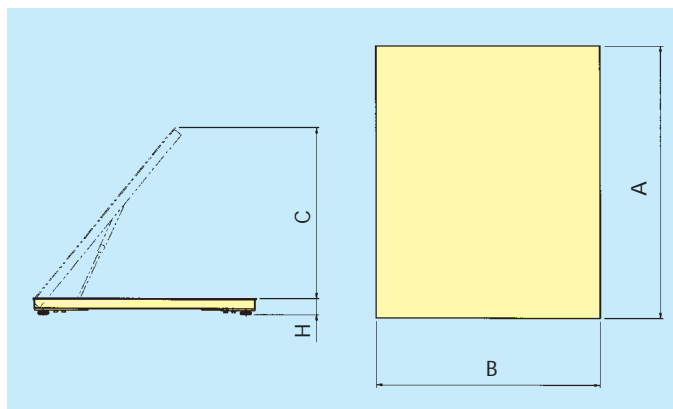


PRM-A



IP 67 Stainless steel load cell



Model	Dimensions (mm)				Standard version Capacity (kg)	Standard version Division (g)	Multirange version Capacity (kg)	Multirange version Division (g)	Weight (kg)
	A	B	C	H					
PRM-A 150.125	1500	1250	940	90	600	200	300/600	100/200	215
			940	90	1500	500	600/1500	200/500	
			940	90	2000	500	600/1500/2000	200/500/1000	
			940	90	3000	1000	1500/3000	500/1000	
PRM-A 200.125	2000	1250	940	90	1500	500	600/1500	200/500	280
			940	90	2000	500	600/1500/2000	200/500/1000	
			940	90	3000	1000	1500/3000	500/1000	

General features

■ An ultra-low profile and a high resistance to overload are the distinctive features of the PRM-A series platform scales.

Weight measurement is performed by 4 stainless steel load cells with protection class IP 67.

One of the chief features of these instruments is the easy access to internal parts for inspection, cleaning and maintenance operations.

The one-piece structure, with the levelling feet directly coupled to the load cells, is a simple and functional load transmission system which ensures that unit is both compact and completely maintenance-free.

PRM-A platform scales are built entirely in AISI 304 stainless steel for use in particularly harsh environments (food industry, chemical industry, etc.).

Frames are available for the pit-mounted version, and there are optional access ramps for the surface-mounted version to allow trolleys weighing.

PRM platform scales can be connected to any of the terminals in the Evoluzione 2000 series, in both single-range (3000/4000 intervals) and multi-range versions. Weighing systems using PRM platform scales are CE approved in compliance with directive 90/384 EEC.384 EEC.384 EEC.

Technical features

■ Capacities: from 600 to 3000 kg

- 4 load cells made entirely in stainless steel (IP67)
- Adjustable levelling feet in stainless steel

Options

■ Surround frame for pit-mounted version

- Non-slip access ramps
- Multirange version
- High-resolution version (for indoor use) up to a maximum of 10000 intervals.



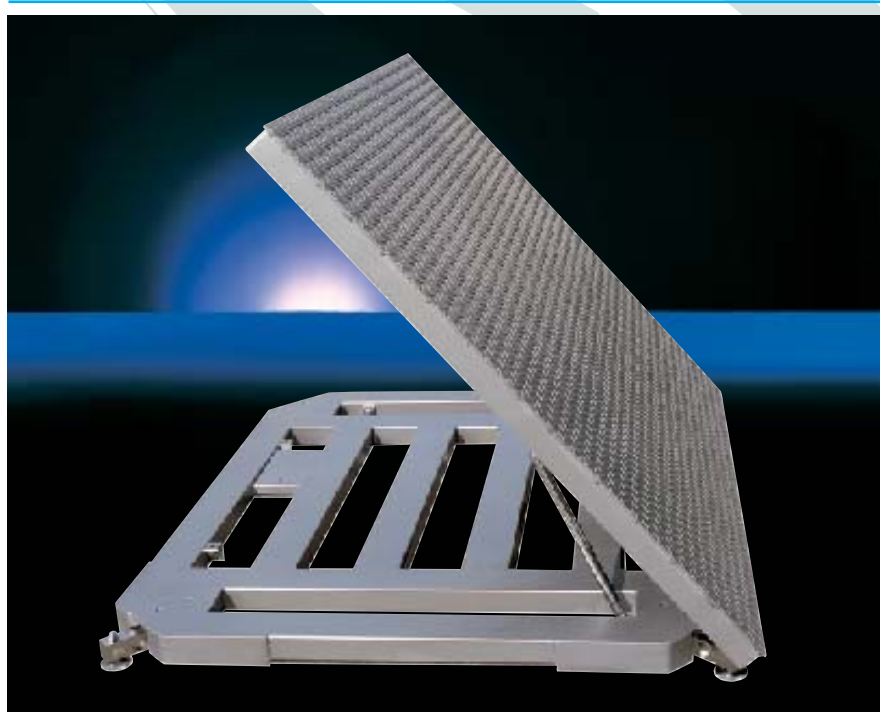
**SOCIETA' COOPERATIVA
BILANCI**

Weighing Instruments and Technologies

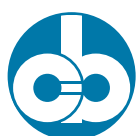
Società Cooperativa Bilanciai Campogalliano a.r.l.
41011 Campogalliano (MO) Italy - Via S. Ferrari, 16
Tel. ++39/059.89.36.11 r.a. - Fax ++39/059.52.70.79
Internet: www.coopbilanciai.it
E.mail: cb@coopbilanciai.it



Platform scale



PRM-A model



SOCIETA' COOPERATIVA
BILANCI