



metal detector
metal detector
metal detector

MDN09/11

MFN09/11



Technical specifications

• Power supply	230V 50/60Hz single-phase
• Power	150 W
• Version	Stainless steel IP65/67



metal detector

MDN09/11
MFN09/11

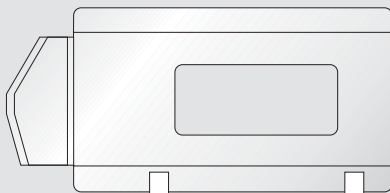
Description MDN 09/11

Principle of operation: digital with bidimensional image
Single operating frequency
Automatic calibration
Panel with 2x16 characters / graphic display (only version 11)
Display of product image (only version 11)
RS232 serial interface (optional)
Can be connected to network (opt. only version 11)
Alphanumeric data entry
Phase adjustment function
Automatic product compensation (tracking)
Ejector synchronism photocell (optional)
Reject check performed photocell (optional)
Function and process alarm output
OK pcs. and rejects totalizer
Report archive
Modifiable password for access to settings
Date/time function
Image printing
Total printouts
Separated electronic equipment (optional)
Conformity with standards ISO-FDA-HACCP

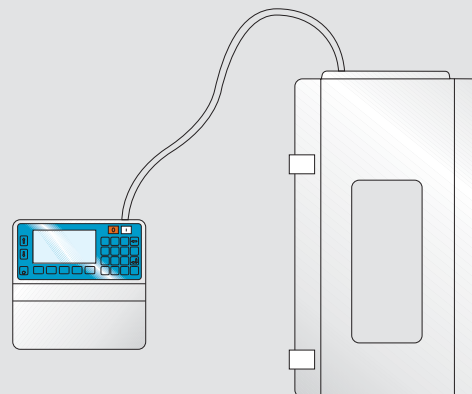
Description MFN 09/11

Principle of operation: digital with bidimensional image
Operating multifrequency
Automatic calibration
Panel with 2x16 characters / graphic display (only version 11)
Display of product image (only version 11)
RS232 serial interface (optional)
Can be connected to network (opt. only version 11)
Alphanumeric data entry
Phase adjustment function
Automatic product compensation (tracking)
Ejector synchronism photocell (optional)
Reject check performed photocell (optional)
Function and process alarm output
OK pcs. and rejects totalizer
Report archive
Modifiable password for access to settings
Date/time function
Image printing
Total printouts
Separated electronic equipment (optional)
Conformity with standards ISO-FDA-HACCP

VERSION WITH INCORPORATED ELECTRONIC EQUIPMENT



VERSION WITH SEPARATED ELECTRONIC EQUIPMENT



Prisma Industriale S.r.l.

• Via La Bionda, 17 - 43036 Fidenza - Parma - Italy • Tel. +39 0524 527270 - Fax +39 0524 524142
• www.prismaindustriale.com • info@prismaindustriale.com

Data appearing in this brochure may be modified without prior warning.
The machine used in this document is with all options